

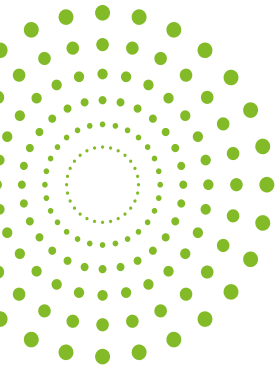
Education

Make your space work®

HON®



Classroom Design Guide



Acknowledging that today's students develop, learn, and connect on a variety of levels and at a myriad of speeds

is the first step in building learning spaces that help young minds stay creative and engaged. That's why we've designed classroom spaces tailored to multiple teaching styles—Lecture, Group, and Blended—for several age groups—Kindergarten-4th grade, 5-8th grade, and 9-12th grade. These spaces use the same set of products that can be reconfigured to meet the needs of various teaching styles. The only difference is the size of the products—that way every grade level has a comfortable classroom.

Feel inspired to create a similar space by selecting the products that work best in your school. Utilize our design services to help you find the right fit!




SCAN TO
CHECK OUT
EDUCATION ON
HON.COM

Lecture Style

Lecture Style remains among the most effective by concentrating student attention. Research by Newcastle University found this approach uniquely well suited for introducing new subject matter and when there is a significant gap of knowledge between the presenter and the audience.

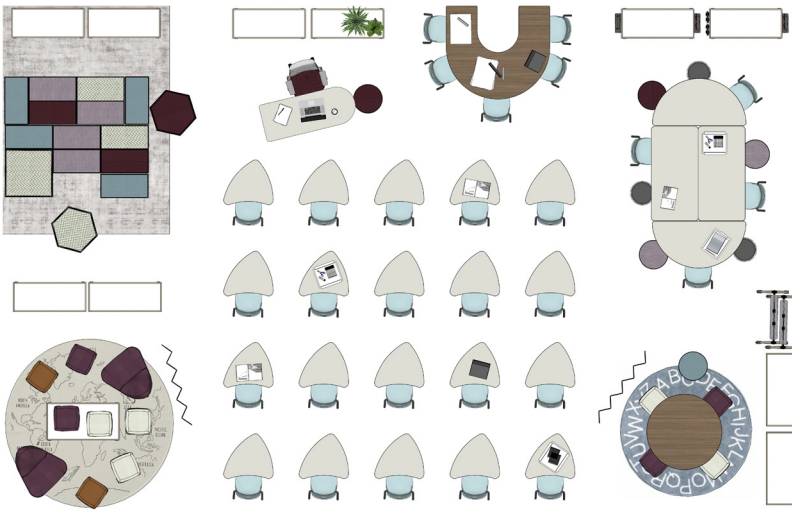
Group Style

Group Style increases self-esteem and personal responsibility which translates into greater information retention and academic success. Group collaboration also teaches interpersonal skills that improve professional relationships after graduation.

Blended Style

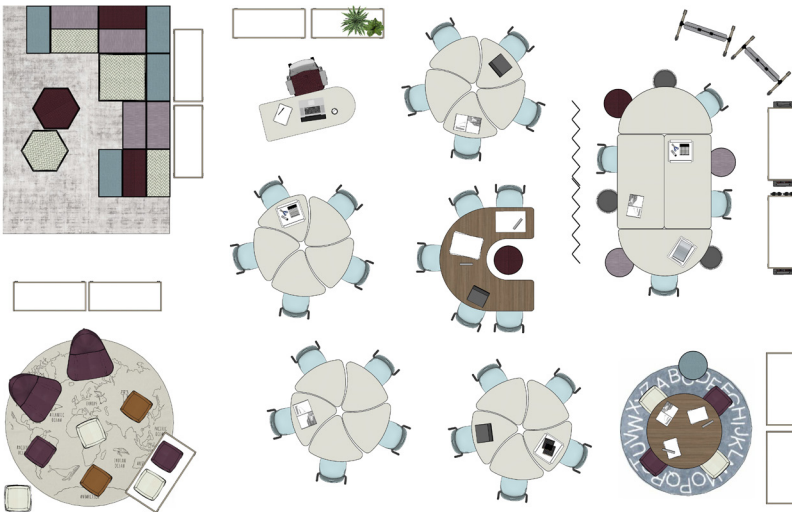
Blended Style mixes components of all teaching styles and is shown to help reach students who learn in a variety of ways. This style helps teachers understand the differences in students, identify their strengths, and expand their versatility, serving students regardless of how they learn best.

Grades K-4



Lecture Style

Students in this style benefit by watching the teacher lead by example. They leverage the power of routines to build their social behaviors.



Group Style

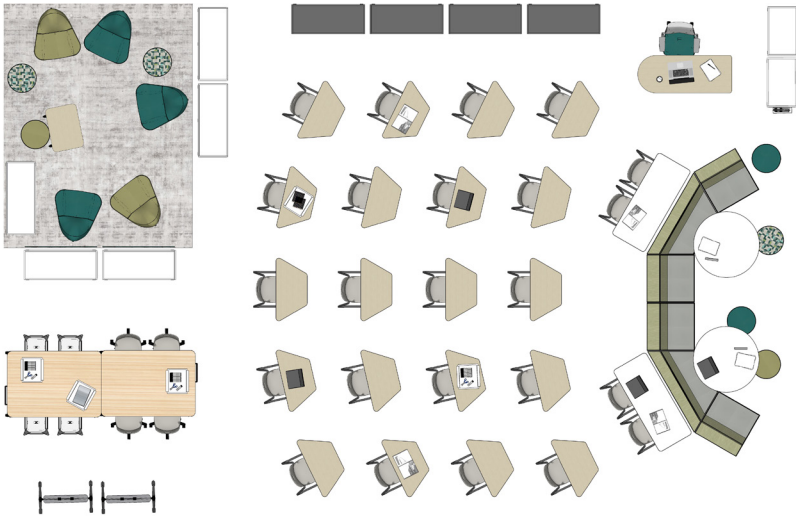
There is a greater focus on where students are seated within an area in lower grade levels to keep a high visibility between students and teachers.



Blended Style

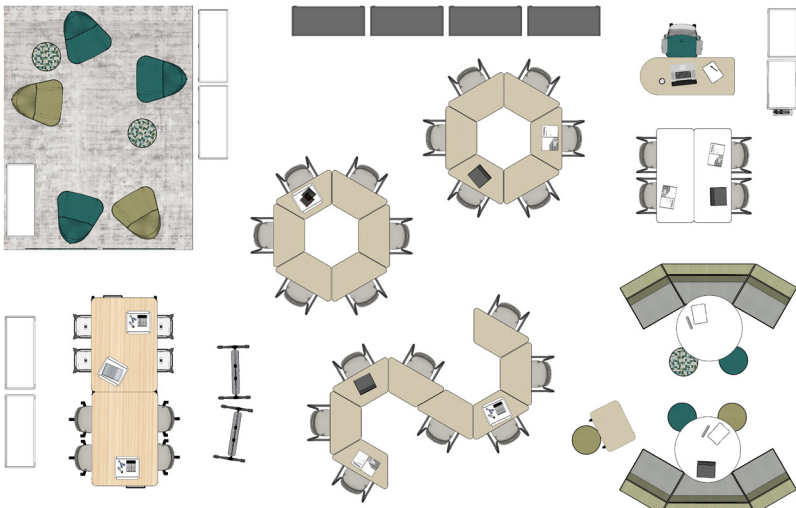
Organized areas are important for personalized learning and keeping materials safe as students move about the different furniture options in the classroom.

Grades 5-8



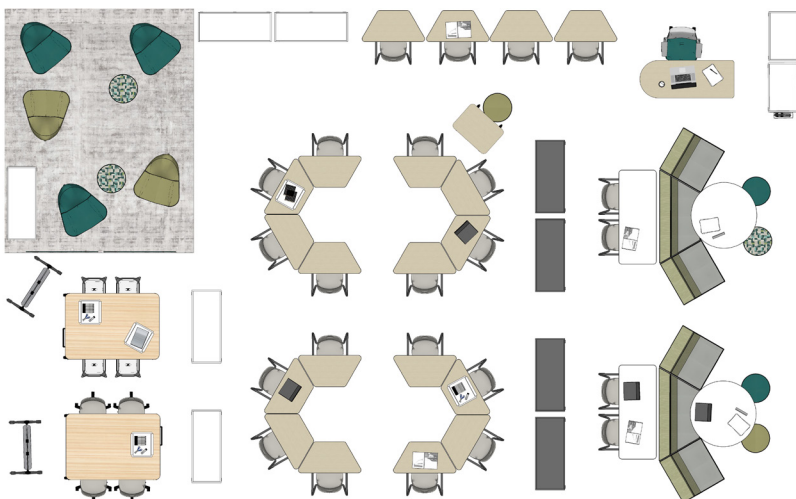
Lecture Style

Students need space to enhance focus and limit disruption from other areas within the learning space.



Group Style

Teachers encourage students to work on interpersonal skills by forming guided groups for small projects and study sessions.

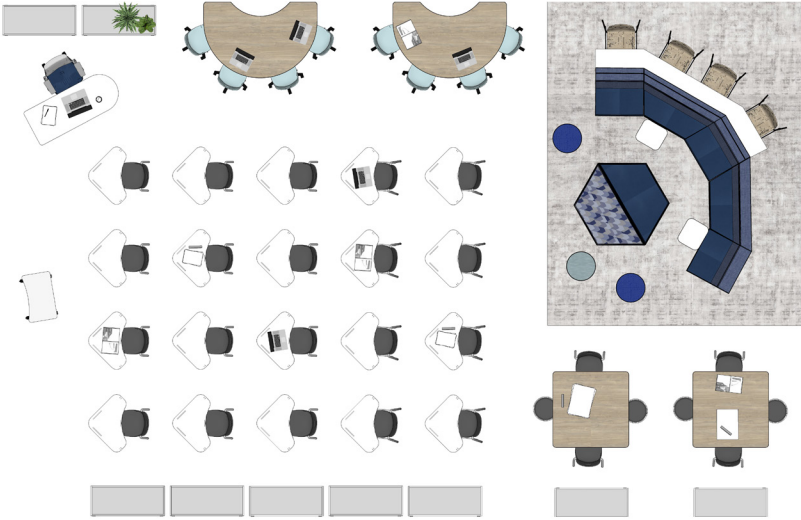


Blended Style

Kids begin to leverage multi-sensory learning experiences and excel in classrooms that support this style of learning.

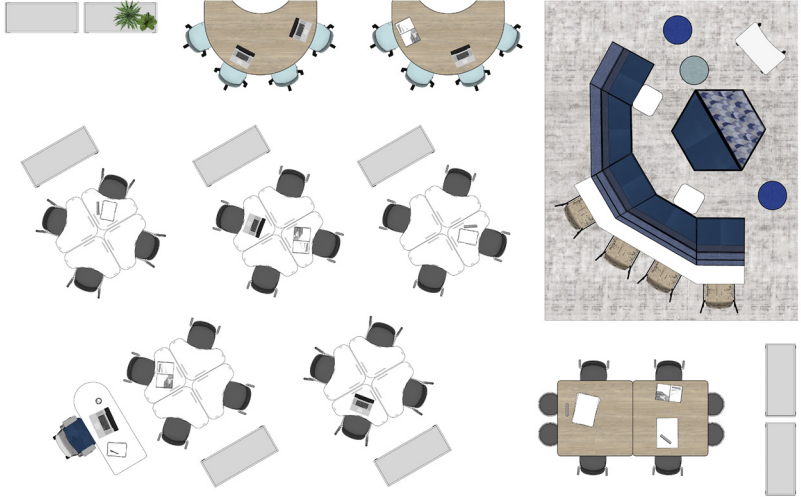
Grades 9-12

Lecture Style



Lecture Style

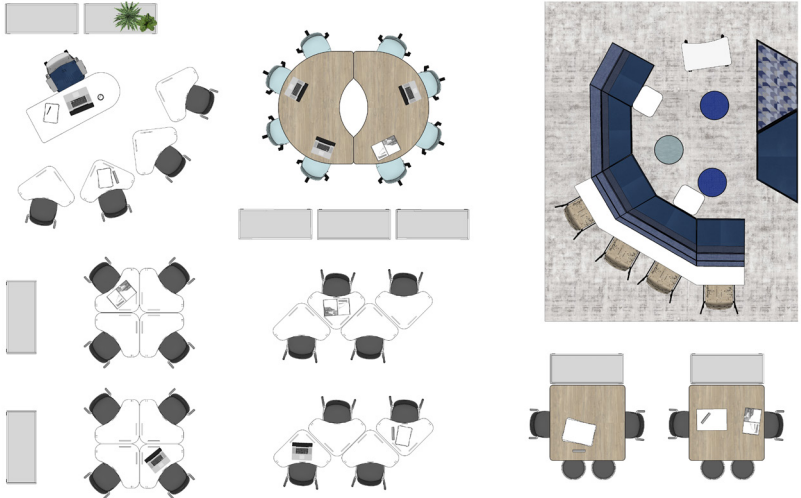
Students need multiple seating options, even during a lecture- so they can choose the furniture in which they learn best, leading to better attentiveness and retainment of knowledge.



Group Style

Grouping students strategically according to interest or abilities with access to integrated technology becomes more important as they prepare for higher education.

Group Style



Blended Style

The Blended Style is ideal for connected learning, which mixes teacher lead instruction and self-directed learning.

Blended Style

Featured Products

Learning environments with creative layouts and colorful, comfortable furniture have been proven to reduce anxiety and stress and promote focus. These spaces use products that can move and reconfigure to meet the needs of various teaching styles. Whether you are looking to lead a lecture or sit back and let students get creative on a group project, you can feel confident that HON's education assortment will be an A+ solution.

**SmartLink® Chairs****Confetti™ Lounge****Confetti Cushions****Flock® Mini****Revel™ Stool****Motivate® Whiteboard****Tangram™ Seating & Ruck™ Stools****Class-ifi™ Storage****SmartLink Teacher Desk****Build™ Makerspace****Build Tables****Build Desks****SmartLink Desks**